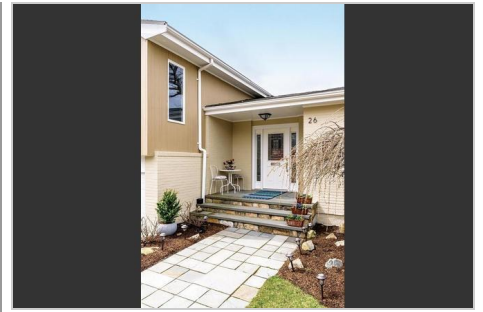


26 MARTHAS LANE

CHESTNUT HILL, MA 02467 | MLS #: 72313685

\$1,399,000 | 5 BEDS | 3 BATHROOMS | 2 GARAGE PARKING | 3,208 SQUARE FEET



View Online: <http://www.26marthaslane.com>
For Instant Photos: Text 327900 To 415-877-1411

Set on a cul de sac in Chestnut Hill, this sleek and sophisticated five bedroom Mid-century Modern home boasts vaulted ceilings and large picture windows. The beautiful level 16,079 square foot lot is enhanced with a plethora of mature trees, shrubs and specimen plantings. Abundant natural sunlight and views of the sprawling perennial gardens enhance the open and airy flow of the living spaces. The eat-in kitchen opens to a three season room that accesses the large bluestone patio. The four main bedrooms are generous size and have custom outfitted closets. There is a separate fifth bedroom and bathroom and home office with built-ins and a private entrance. The lower level multi purpose room is 35 feet in length and could serve as a playroom or in home studio. Close by is Skyline Park, conservation land with many walking trails, the Edith C. Baker Elementary School, shopping and dining at The Street at Chestnut Hill and Chestnut Hill Square, and multiple medical facilities...

- Private cul de sac
- Mid Century Modern style home
- 16,079 square foot with mature plantings
- Vaulted Ceilings
- Large windows
- Open floor plan
- Three Season room
- Bluestone Patio



AGENT INFORMATION

Michele Friedler Team

M: 617-877-8177

michelefriedlerteam@hammondre.com

michelefriedlerteam.myhammondagent.com

Hammond Residential Real Estate

826 Boylston Street
Chestnut Hill, MA 02467

ABOUT MICHELE FRIEDLER TEAM

Consistently ranked as one of the top real estate teams in the Greater Boston area, servicing Brookline, Chestnut Hill, Newton, Boston, Cambridge and surrounding suburbs. We offer our seller and buyer clients quality customized personal service enhanced with the latest technology. A testament to our commitment is evident by a loyal following for more than 20 years.