

# 8250 SW 86TH CT

MIAMI, FLORIDA 33143 | MLS #: A11206146

**\$1,199,900** | 4 BEDS | 2.5 BATHROOMS | 2132 SQFT SQUARE FEET

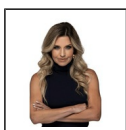


View Online: <http://www.mysinglepropertywebsites.com/105976>  
For Instant Photos: Text 08250 To 415-877-1411

Welcome to Dadeland Park in the Village of Kings Creek in South Miami, the ideal spot to call your next HOME! Updated and turn-key, this stunning home offers an open layout with soaring ceilings and natural light beaming throughout this split floor plan of 4 bedrooms, 2.5 baths with 2-car garage and paved circular driveway. Surrounded by meticulously manicured landscaping, this home is enclosed on both sides and features Hurricane impact windows and a spacious pool with adjacent jacuzzi. Community has a pool, lighted tennis courts, racquetball, basketball ball courts and clubhouse. Conveniently located minutes from Dadeland Mall, Baptist and South Miami Hospital, access to several Expressways and near University of Miami, Coral Gables, Pinecrest. Google full address on YouTube for video.



- Completely Renovated
- 4 Bedrooms + 2.5 Baths
- 2-Car Garage
- Pool



## AGENT INFORMATION

**Dinorah de Cardenas-Guerra**

P: 3053801497  
M: 3053050300  
License # 3160356  
dguerra@resf.com  
resf.com

## RESF

814 Ponce de Leon Blvd., Suite 503  
Coral Gables, Florida 33134

## ABOUT DINORAH DE CARDENAS-GUERRA

□

□

Disclaimer: All information deemed reliable but not guaranteed.