

PARCEL 2 HELEN ST. PAST 7639 HELEN ST.

MELBOURNE, FL 32904

\$265,000 | 2.03 ACRE SQUARE FEET



View Online: <http://www.mysinglepropertywebsites.com/114350>

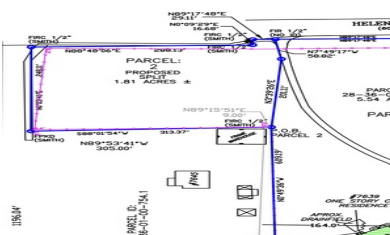
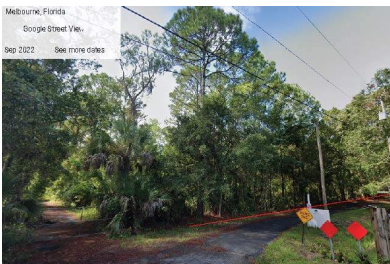
For Instant Photos: Text 233838 To 415-877-1411

Call Lynn Now 321-427-6788 for other properties.

Rare opportunity to purchase vacant residential land in the heart of West Melbourne! Discerning buyers want to build a custom home and large parcels are not easy to come by! No HOA to join, The lot is close to shopping, dining, parks, beaches, & the ideal location to make your dream home a reality! The area boasts A-rated schools, close to all major employers, a few minutes to I-95, & less than an hour to the Orlando airports. Large lot for a custom home, pool & enough space to store a boat or RV. Great lot, not heavily treed. Time to build what you really want for your dream home!

Use Lynn directly as your Realtor, if you are Military or Law enforcement, she will pay up to 1% of the sales price towards the Buyer's closing cost.

- 2 Acre Lot!
- Close to Shopping
- Lots of Privacy!





AGENT INFORMATION

Lynn C. Burley
M: 321-427-6788
lynn@burleyproperties.com
www.BurleyProperties.com

Burley Properties

ABOUT LYNN C. BURLEY

**LYNN C. BURLEY IS THE
BROKER OF BURLEY
PROPERTIES, A FULL
SERVICE REAL ESTATE
BROKERAGE SPECIALIZING
IN TRADITIONAL, SHORT
SALE & FORECLOSURE
PROPERTIES.**

**LYNN C. BURLEY IS THE
BROKER OF BURLEY
PROPERTIES, A FULL
SERVICE REAL ESTATE
BROKERAGE
SPECIALIZING IN
TRADITIONAL, SHORT
SALE & FOR**

□

□

Disclaimer: All information deemed reliable but not guaranteed.