

99-101 NASHUA ROAD

PEPPERELL, MA 01463

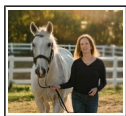
\$409,000 | 4+ BEDS | 3 BATHROOMS | 10 CAR PARKING | 2,560 SQUARE FEET



View Online: <http://www.mysinglepropertywebsites.com/11982>
For Instant Photos: Text 11982 To 415-877-1411

10 acre farm with large open fields and a cart path down to the Nashua River! 4+ BR home with 3 baths. Potential for at least one more lot, testing done in 2011. Small barn for horses/animals. Updates include birch cabinets in the kitchen with Corian counters, new windows, passive solar hot water system, sunroom and greenhouse. Brand new 6BR Presby septic system. \$6,000 decorating credit to buyers at closing.

- 10 Acres
- Potential building lot
- River frontage
- Barn
- New septic system
- Updated kitchen and bath



AGENT INFORMATION

Ginette Brockway
M: 978-621-4370
License # 97655
ginette.brockway@verizon.net
homesandhorses.com



Keller Williams Realty
200 Baker Avenue
Concord, MA 01742

ABOUT GINETTE BROCKWAY

Ginette Brockway has been a leading Realtor since 1991. She specializes in residential properties ranging from condominiums to large horse farms and estates. She provides the finest resources in terms of market expertise and the latest technology to better serve her clients in a dynamic market.

□

□

Disclaimer: All information deemed reliable but not guaranteed.