

628 N DENIZA BLVD

BUCKEYE, AZ 85326 | MLS #: 6676822

\$414,999 | 2 BEDS | 1 BATHROOMS | 2 CARPORT SPACES | 928 SQUARE FEET



View Online: <http://628deniza.homeis4sale.com>
For Instant Photos: Text 934281 To 415-877-1411

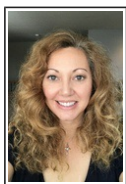
Home, sweet home! Bring your trucks, trailers, toy haulers & more! With NO HOA, This delightful corner lot sits on 2 county lots totaling over 1/3rd of an acre, (15,389sqft). Cozy home boasts an inviting interior with stylish wood-look flooring & a spacious living area. Relish in the joy of festive meals in the formal dining space. The kitchen impresses with its wooden cabinets, sleek appliances, glossy corian counters, and a convenient breakfast bar. Experience tranquility in the main bedroom, featuring a generous walk-in closet with ample storage & in-ground gun safe. Spacious bathroom with custom tiled shower. Outside, the side yard is perfect for entertaining, and the backyard presents 2 RV gates, Metal garage space w/ electric & 2 sheds, providing even more storage options!



This home offers plentiful space for indoor/outdoor living and is a fantastic opportunity not to be missed! Home has been meticulously cared for and improved as follows:

3 security...

- RV Gate
- Corner Lot
- Walk-in Closet
- Dual Pane Windows



AGENT INFORMATION

Sophia Harder

P: (602) 620-4603

License # SA506017000

seharder3@aol.com

AZ Marketplace Realty

2101 E Broadway Rd #17

Tempe, AZ 85282



□

□

Disclaimer: All information deemed reliable but not guaranteed.