

300 W NOPAL PL

CHANDLER, AZ 85225 | MLS #: 6696855

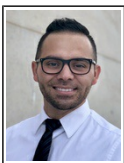
\$475,000 | 3 BEDS | 2 BATHROOMS | 2 CARPORT SPACES | 1,441 SQUARE FEET



View Online: <http://300nopal.homeis4sale.com>
For Instant Photos: Text 253408 To 415-877-1411

Welcome to this charming home nestled on a large corner lot! Providing 3 beds, 2 baths, RV gate, low-care landscape, & 2-carport parking w/extended driveway. Inviting interior showcases tons of natural light, designer paint, tile flooring in common areas, and wood-look flooring in bedrooms. Perfect for gatherings, this gem boasts a formal living room and an open layout paired w/fireplace & French doors to the back! The fully equipped kitchen has granite counters, subway tile backsplash, recessed & pendant lighting, and an island w/breakfast bar. Large main bedroom offers a private bathroom & two closets. If entertaining is on your mind, the spacious backyard awaits! With mature trees, a covered patio, natural grass, & a diving pool, this space promises year-round enjoyment. Move-in ready!

- Corner Lot
- RV Gate
- Fireplace
- Granite Countertops
- Recessed Lighting



AGENT INFORMATION

Peter Roman
P: 602-435-5582
License # SA662083000
p.roman.realestate@gmail.com

EMG Real Estate
1502 W Osborn Rd Suite A
Phoenix, AZ 85015



□

□

Disclaimer: All information deemed reliable but not guaranteed.