

# 4845 ALDAMA ST

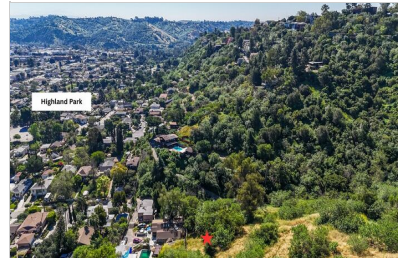
HIGHLAND PARK, CA 90042 | MLS #: AR26058970

\$465,000 | 23,033 SQUARE FEET



View Online: <http://www.mysinglepropertywebsites.com/123274>  
For Instant Photos: Text 518879 To 415-877-1411

Tucked away in a peaceful and secluded pocket of Highland Park and surrounded by lush tranquil greenery this expansive 23,033 sq ft parcel awaits your vision! Located in LA's hottest neighborhood, this land is extremely special in that it backs up to Heidelberg Park (18 beautiful acres of hiking trails, wilderness, birds, and flora)! When there, you feel the serenity and connection to nature while still being a stone's throw from endless trendy coffee shops, venues and culinary treasures. This prime development opportunity has unmatched versatility in what you could create with it. Zoned for residential use, the land offers phenomenal potential for so many different uses, including the possibility of an SB9 lot split, multiple dwellings/rental units, or a dream family compound. This unique set up is a perfect canvas for developers, investors, or future homeowners seeking something truly unique in a rapidly appreciating area. Highland park is one of LA's most artistic and cu...



## AGENT INFORMATION

**Jessica L. Romero**  
P: 626-414-7464  
License # DRE: 01920921  
jessicalromero@kw.com  
jessicalromero.com/



**Keller Williams Realty, DRE#**  
**01444805**  
199 S Los Robles Ave #130  
Pasadena, CA 91101

## ABOUT JESSICA L. ROMERO

Jessica's area of expertise is not only assisting local buyers and sellers with meeting their real estate goals efficiently and without hassle, but also in providing data-driven assessments of value for a wide array of properties.

From fixers to investments to high end, re...

□

□

Disclaimer: All information deemed reliable but not guaranteed.