

2117 E GRANITE VIEW DR

PHOENIX, AZ 85048 | MLS #: 5300004

\$469,000 | OFFICE + 3 BEDS | 2 BATHROOMS | 2836 SQUARE FEET



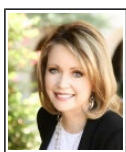
View Online: <http://egrantiteviewdr.homeis4sale.com>
For Instant Photos: Text 299389 To 415-877-1411



BEAUTIFUL AHWATUKEE FOOTHILLS 3 BEDROOM, 2.5 BATH HOME. LARGE EAT-IN KITCHEN WITH SOLID SURFACE CORIAN COUNTERTOPS. HIGH CEILINGS THROUGHOUT THE HOME LEND A SPACIOUS FEEL. MASTER BATH BOASTS DOUBLE SINKS, SEPARATE TUB AND SHOWER, AND WALK IN CLOSET. SECONDARY BEDROOMS ARE GENEROUSLY SIZED, LIGHT AND BRIGHT. BACKYARD HAS A RESORT FEEL IN A MANAGEABLE SPACE, WITH COVERED PATIO AND SPARKLING POOL. PROFESSIONALLY LANDSCAPED FOR YOUR ENJOYMENT. THIS HOME HAS SOFT, NEUTRAL COLORS JUST WAITING FOR YOU TO ADD YOUR PERSONAL TOUCH! LOCATED IN THE HIGHLY SOUGHT, WELL MAINTAINED MOUNTAIN PARK RANCH NEIGHBORHOOD WITH COMMUNITY PLAYGROUND, TENNIS COURTS, POOL AND SPA. SITUATED IN THE DESIRABLE KYRENE SCHOOL DISTRICT. EASY ACCESS TO SHOPS, RESTAURANTS, AND HIGHWAYS FOR GETTING TO WORK OR PLAY!



- GORGEOUS CURB APPEAL
- CORIAN COUNTERTOPS
- SOARING CEILINGS
- SOOTHING COLOR PALETTE
- CENTER KITCHEN ISLAND
- MOUNTAIN VIEWS
- COVERED PATIO
- REFRESHING POOL



AGENT INFORMATION

Le Knight

P: 480-792-9500
M: 602-616-4330
the2nites@gmail.com



RE/MAX Fine Properties
21000 N. Pima Rd. Ste. 100
Scottsdale, AZ 85255

□

□

Disclaimer: All information deemed reliable but not guaranteed.