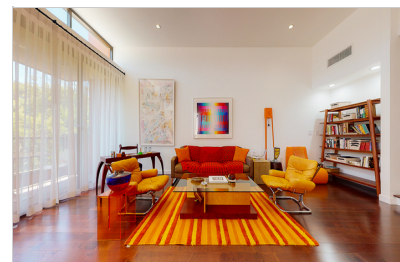
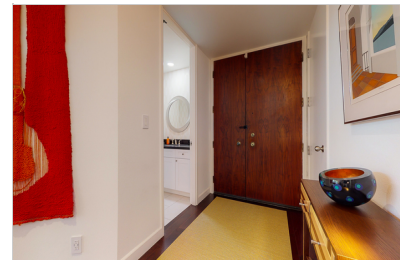


415 S SPALDING DR

BEVERLY HILLS, CA 90212 | MLS #: 320006364

\$1,525,000 | 2 BEDS | 2.5 BATHROOMS | 2 CAR PARKING | 1942 SQUARE FEET



View Online: <http://www.mysinglepropertywebsites.com/98754>
For Instant Photos: Text 918768 To 415-877-1411

Modern luxury, convenience and sophistication blend seamlessly to bring you this light and bright 2 bed 2.5 bath top floor unit in one of the most sought after buildings in Beverly Hills! Overlooking tranquil treetop views, this prime unit features chic, designer finishes throughout including high ceilings, a step down living room with large walls -perfect for showcasing artwork, a gourmet chef's kitchen, private balcony and wood floors that span the entirety of the ideal floor plan! The spacious primary bedroom suite feels like your own private penthouse boasting a huge walk-in closet and a resort-like bathroom with a large soaking tub, detached glass shower and your very own dry sauna! All set in the best location just a stone's throw to Roxbury Park and close proximity to shops and dining on nearby Rodeo Drive!

- Top floor unit
- Chef's kitchen
- Private balcony
- Wood floors through out
- Spacious primary suite
- Private dry sauna
- Washer and dryer in unit
- Two assigned parking spots



AGENT INFORMATION

Jessica L. Romero
P: 626-414-7464
License # DRE: 01920921
jessicalromero@kw.com
jessicalromero.com/



Keller Williams Realty, DRE#
01444805
199 S Los Robles Ave #130
Pasadena, CA 91101

ABOUT JESSICA L. ROMERO

Jessica's area of expertise is not only assisting local buyers and sellers with meeting their real estate goals efficiently and without hassle, but also in providing data-driven assessments of value for a wide array of properties.

From fixers to investments to high end, re...

□

□

Disclaimer: All information deemed reliable but not guaranteed.